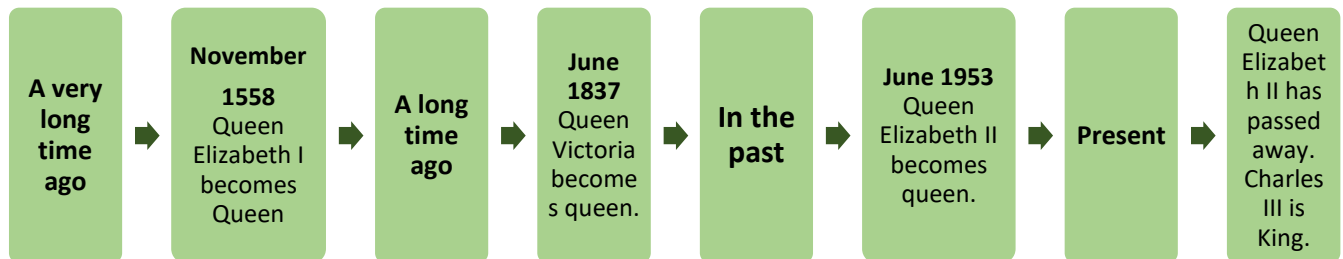


Year 1 - History Spring 2

Learning about the past.

Key vocabulary	
Word	Definition
Royalty	People who belong to the family of a king or queen.
Coronation	The ceremony in which a person is made king or queen.
Reign	How long somebody is king or queen.
Artefact	An object from the past.
Present	Happening now.
Past	Happened before. This could be yesterday or years ago.

Key people	
King Charles III 	Queen Elizabeth II 
Queen Victoria 	Queen Elizabeth I 



Key facts

Queen Elizabeth I became queen a very long time ago in 1558, that is over 500 years ago.

Queen Victoria became queen a long time ago in 1837. She was queen for 63 years. She was married to Prince Albert.

Queen Elizabeth II was queen of The United Kingdom until 2022. The United Kingdom is England, Northern Ireland, Scotland and Wales.

King Charles III is king of The United Kingdom. His coronation was on the 6th May 2023.

A queen or king is the head of state. This means she/ he represents the country but she/ he does not make the laws.

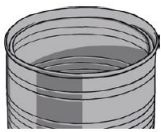
Year 1 – Science Spring 2

Exploring Materials

Key Ideas

- Materials have different properties.
- Materials can be grouped together based on their properties into metals, fabrics, wood, paper, plastic and ceramics (including glass).
- Materials might or might not be used for a specific job.

Materials



metal



wood



glass



plastic



fabric



paper

Key_vocabulary

Word	Definition
Properties	A way to describe things.
Material	What something is made from.
Object	A thing that can be seen or touched.
Surface	An outside part or layer.

Some common properties of materials.

Word	Definition
smooth	Objects that have no lumps or bumps.
rough	Objects that feel and look uneven or bumpy.
hard	Not easily broken or bent
soft	Changes shape when pressed.
stretchy	Can be pulled longer or wider without breaking.
flexible	Can bend easily without breaking.
bendy	Can be shaped into a curve or arch.
stiff	Not easily bent or changed shape.
rigid	Unable to bend or forced out of shape.
magnetic	Attracts to iron or other metals.